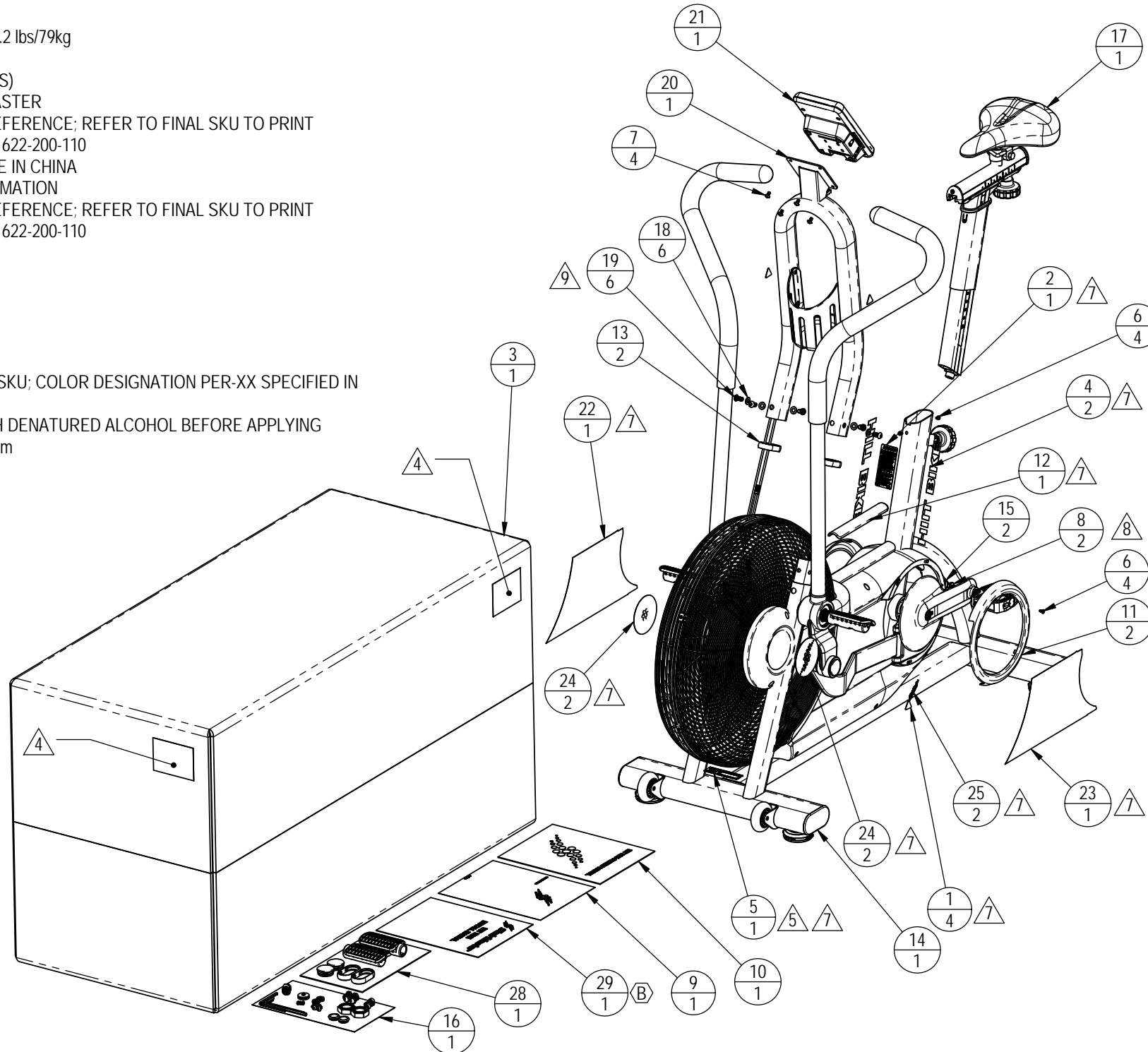


NOTES:

1. BOX SIZE
 - A. L=1265mm
 - B. H=550mm
 - C. W=690mm
2. BOX UNIT GROSS WEIGHT: 174.2 lbs/79kg
3. NET WEIGHT: 123.5 lbs/56kg
4. LABEL INFORMATION (4 PLACES)
 - A. MODEL: HIIT BIKE, STAIRMASTER
 - B. SKU: 9-4650-XXXXXP0 IS REFERENCE; REFER TO FINAL SKU TO PRINT
 - C. SERIAL NUMBER: PER DOC 622-200-110
 - D. COUNTRY OF ORIGIN: MADE IN CHINA
5. PRIMARY SERIAL LABEL INFORMATION
 - A. SKU: 9-4650-XXXXXP0 IS REFERENCE; REFER TO FINAL SKU TO PRINT
 - B. SERIAL NUMBER: PER DOC 622-200-110
 - C. MFG DATE: MM/YYYY
 - D. PHASE: N/A
 - E. CYCLES: N/A
 - F. WATTS: N/A
 - G. VOLTS/AMPS: N/A
 - H. TYPE: N/A
6. COLOR IS SPECIFIED IN FINAL SKU; COLOR DESIGNATION PER-XX SPECIFIED IN SOP 620-200-112
7. CLEAN MATING SURFACE WITH DENATURED ALCOHOL BEFORE APPLYING
8. TORQUE TO 33-37 lb-ft / 45-50 Nm
9. TORQUE TO 10 lb-ft / 13.5 Nm



REVISION HISTORY				
REV	DATE	DESCRIPTION	ECO	BY
A	8/31/2017	PRODUCTION RELEASE	15771	AW
B	10/5/2017	ADD 620-8582	15819	AW

ITEM NO.	PART NUMBER	DESCRIPTION	QTY.	NOTES
1	050-2142	LABEL, WARNING, PINCH POINT, ICON	4	
2	050-2215	LABEL, GENERAL WARNING, E-BTS	1	
3	050-2325	Box, Packaging, Tempest, StairMaster	1	
4	050-5518	LOGO, HIITBIKE, DOWN TUBE	2	
5	050-5487	(Label, S/N, Non-Powered, Primary, Core H&F	1	
6	110-3581	SCREW, M4.2, 8mm, PHT, PH, SS	4	
7	410-3690	Screw, M5x0.8, 10mm, THM, PH, SS	4	REF
8	110-3717	Screw, M8x1.25, 12mm, FCM, HE, AS, E-CB, Gr-12.9	2	
9	620-8223	DOC, WARRANTY, COMMERCIAL, STAIRMASTER	1	
10	620-8245	Manual, Owners, HIIT BIKE	1	
11	718-5487-XX	SHROUD, CRANK RING, TURBO	2	
12	718-5519-XX	STEP, COVER, TUBE, TURBO TRAINER	1	
13	718-5520-XX	RING, BEAUTY, RAIL SPACER	2	
14	718-5789-XX	BASE, ASSY, FAN, HIIT BIKE	1	
15	718-5646	Cap, End, Crank	2	
16	718-5800	Kit, Hardware, HIIT BIKE	1	
17	718-5734	ASSY, SEAT POST, W/ SLIDER, AIRFIT G2.5	1	
18	731-0355	WASHER, PLAIN, M8, NARROW	6	
19	731-5162	Screw, M8x1.25, 16mm, BHC, HK, CS, NP	6	
20	718-5774-XX	ASSY, DISPLAY BASE, HIIT BIKE	1	
21	718-5722	HIIT DISPLAY ASSY.	1	
22	050-5515	LABEL, SHROUD, RIGHT, HIIT BIKE	1	
23	050-5516	LABEL, SHROUD, LEFT, HIIT BIKE	1	
24	050-5517	LABEL, COVER, AXLE, FAN, HIIT BIKE	2	
25	050-5528	LABEL, HIIT BIKE STAIRMASTER	2	
26	718-5820	ASSY, PEDAL, HIIT BIKE, L	1	
27	718-5821	ASSY, PEDAL, HIIT BIKE, R	1	
28	718-5799-XX	Kit, Acc., HIIT BIKE	1	
29	620-8582	MANUAL, INSTALL, HIIT BIKE	1	

DOCUMENT STATUS:

NOTICE OF PROPRIETARY INFORMATION
 THIS DOCUMENT SHALL NOT BE REPRODUCED NOR SHALL THE INFORMATION CONTAINED HEREIN BE USED BY OR DISCLOSED TO OTHER EXCEPT AS EXPRESSLY AUTHORIZED BY CORE HEALTH & FITNESS, LLC.

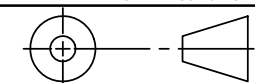
CLASS OF WORK	UNLESS OTHERWISE SPECIFIED DIMS ARE IN mm. TOLERANCES FOR MEASURE OF LENGTH ARE:							ANGLES = ±2°
	0.5 to 3	> 3 to 6	> 6 to 30	> 30 to 120	> 120 to 400	> 400 to 1000	> 1000 to 2000	
FINE	±0.05	±0.05	±0.1	±0.15	±0.2	±0.3	±0.5	----
MEDIUM	±0.1	±0.1	±0.2	±0.3	±0.5	±0.8	±1.2	±2
COARSE	±0.2	±0.3	±0.5	±0.8	±1.2	±2	±3	±4
VERY COARSE	----	±0.5	±1	±1.5	±2.5	±4	±6	±8

MATERIAL
SEE BOM

FINISH
SEE FINAL SKU FOR COLOR

VENDOR: P/N:

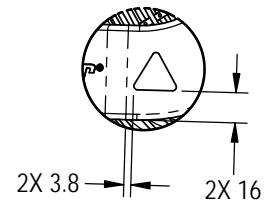
THIRD ANGLE PROJECTION



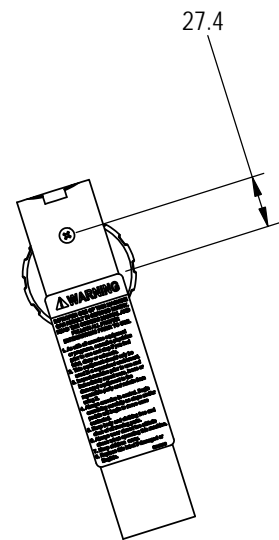
CORE HEALTH & FITNESS, LLC

4400 NE 77th Ave., Suite 300
 Vancouver, WA 98662

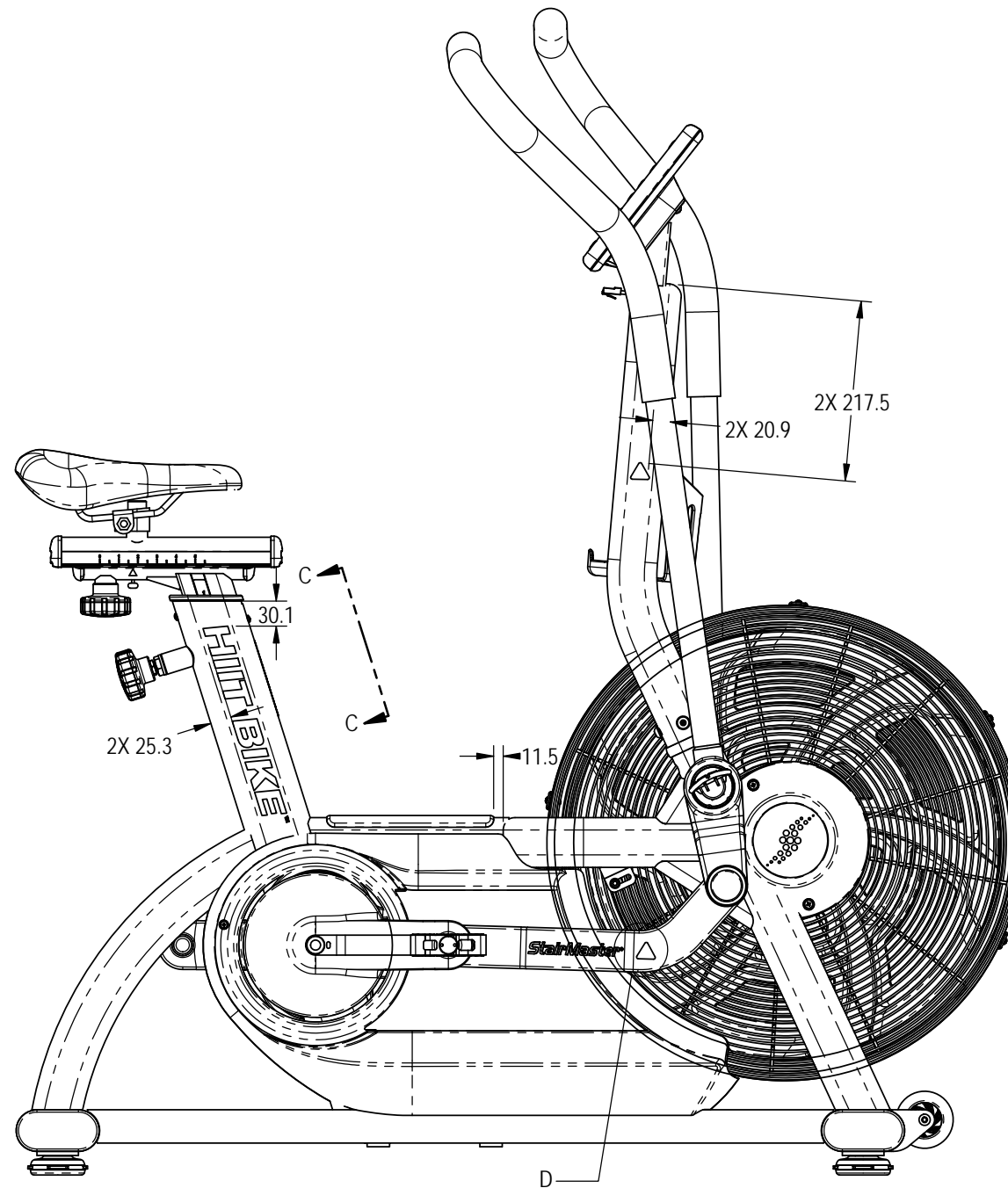
DRAWN	INITIAL AW	DATE 8/31/2017	CORE PART NO 9-4650-XXXXXP0	REV B
CHECKED			TITLE HIIT BIKE, STAIRMASTER	
APPROVED			SCALE: 1:12	SHEET 1 OF 2
	U.O.M.	MM	SHEET SIZE: B	



DETAIL D
SCALE 1:4



SECTION C-C
SCALE 1:4



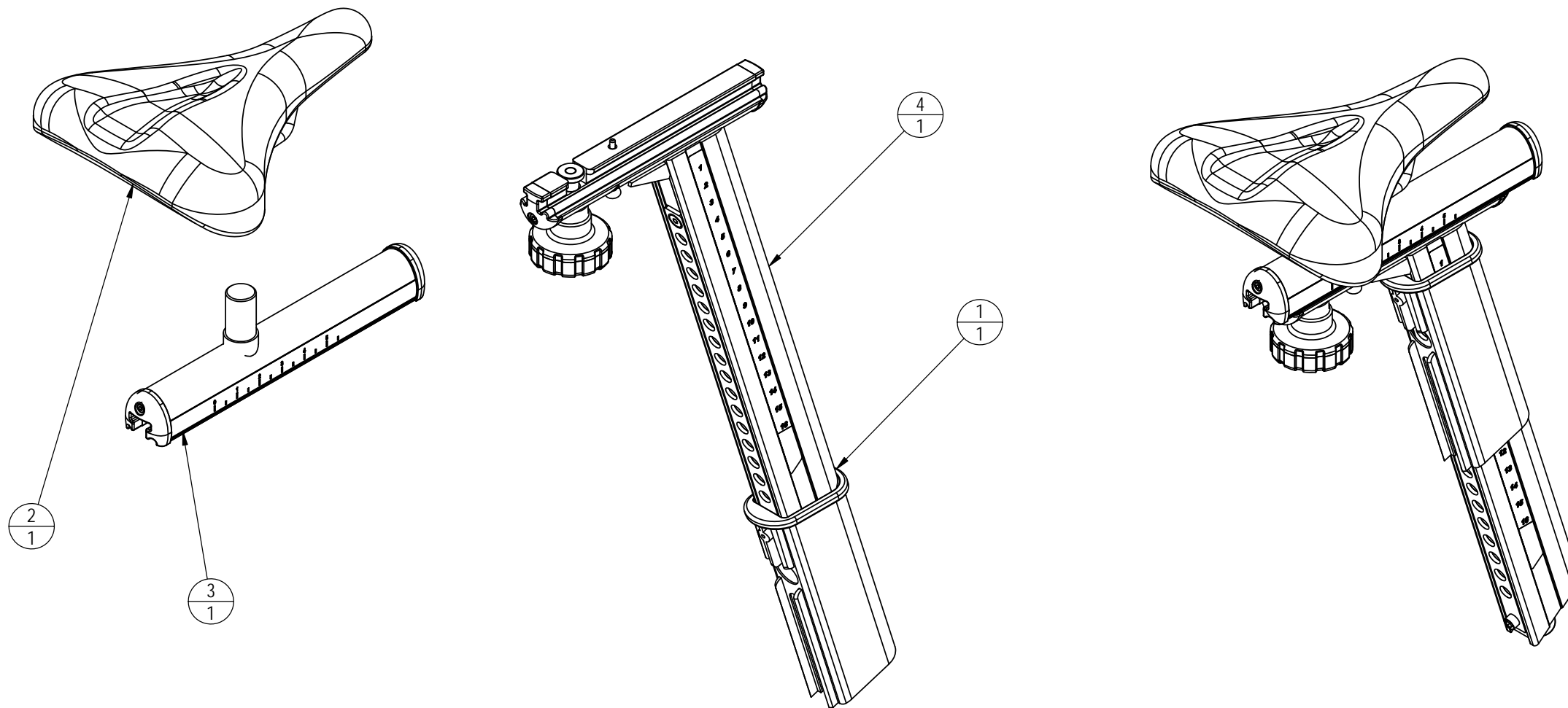
CORE HEALTH & FITNESS, LLC		
4400 NE 77th Ave., Suite 300 Vancouver, WA 98662		
CORE PART NO	REV	
9-4650-XXXXXPO	B	
TITLE		
HIIT BIKE, STAIRMASTER		
SCALE: 1:8	SHEET 2 OF 2	SHEET SIZE: B

NOTES:

1. FOR SERVICE ITEMS, ASSEMBLE ITEMS BEFORE PACKAGING
 - A. PACKAGE ITEMS IN A MANNER THAT THEY WILL NOT BE DAMAGED DURING SHIPPING/STORAGE
 - B. PACKAGE IN A PLASTIC BAG WITH P/N, DESCRIPTION, REVISION, PO#, ONE KIT PER BAG
 - C. LABEL PACKAGE TO INCLUDE
 - a. PO NUMBER AND DATE
 - b. ASSEMBLY NUMBER
 - c. BAR CODE OF ASSEMBLY NUMBER (CODE 128)
 - d. ASSEMBLY DESCRIPTION
 - e. ASSEMBLY REVISION
 - f. WEIGHT (LBS/KG)

REVISION HISTORY

REV	DATE	DESCRIPTION	ECO	BY
A	12/27/2016	PRODUCTION RELEASE	15635	MMG
B	8/7/2017	CHANGE ADJUSTMENT KNOB	15771	AW



ITEM NO.	PART NUMBER	DESCRIPTION	QTY.
1	718-5622	Sleeve, Post, Seat, AIRFIT, G2	1
2	718-5624	SADDLE, AIRFIT, G2.5	1
3	718-5738	ASSY, SLIDER, AIRFIT G2.5	1
4	718-5746	ASSY, SEATPOST, AIRFIT, G2.5	1

DOCUMENT STATUS:

NOTICE OF PROPRIETARY INFORMATION
 THIS DOCUMENT SHALL NOT BE REPRODUCED NOR SHALL THE INFORMATION CONTAINED HEREIN BE USED BY OR DISCLOSED TO OTHER EXCEPT AS EXPRESSLY AUTHORIZED BY CORE HEALTH & FITNESS, LLC.

CLASS OF WORK	UNLESS OTHERWISE SPECIFIED DIMS ARE IN mm. TOLERANCES FOR MEASURE OF LENGTH ARE:							ANGLES = ±2°		
	0.5 to 3	> 3 to 6	> 6 to 30	> 30 to 120	> 120 to 400	> 400 to 1000	> 1000 to 2000	> 2000		
FINE	±0.05	±0.05	±0.1	±0.15	±0.2	±0.3	±0.5	----		
MEDIUM	±0.1	±0.1	±0.2	±0.3	±0.5	±0.8	±1.2	±2		
COARSE	±0.2	±0.3	±0.5	±0.8	±1.2	±2	±3	±4		
VERY COARSE	----	±0.5	±1	±1.5	±2.5	±4	±6	±8		

MATERIAL SEE BOM	THIRD ANGLE PROJECTION 	
FINISH N/A	DRAWN MMG	DATE 12/27/16
VENDOR: N/A	U.O.M.	MM
P/N: N/A		

CORE HEALTH & FITNESS, LLC

4400 NE 77th Ave., Suite 300
 Vancouver, WA 98662

CORE PART NO. 718-5734 REV B

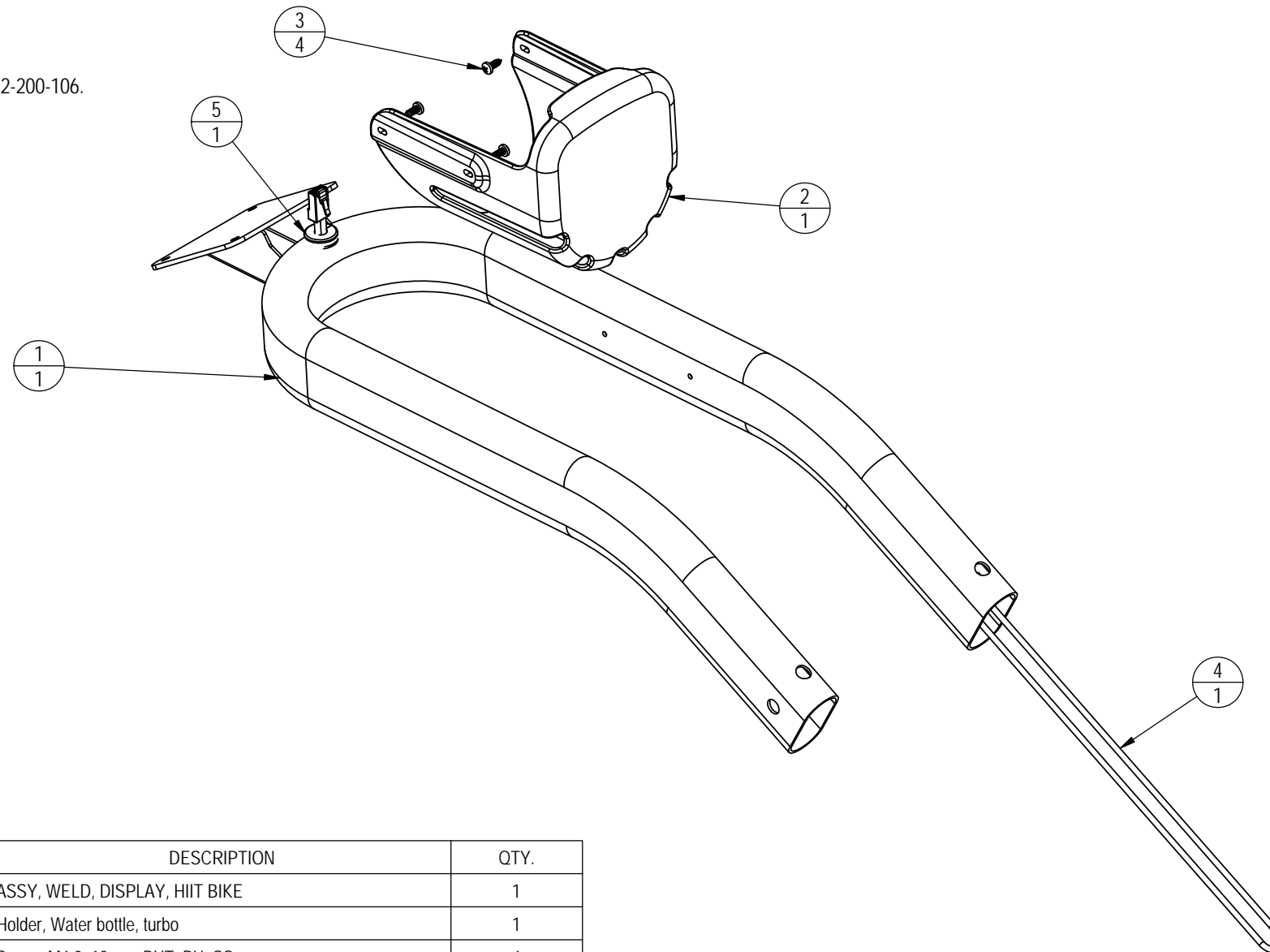
TITLE ASSY, SEAT POST, W/ SLIDER, AIRFIT G2.5

SCALE: 1:4 SHEET 1 OF 1 SHEET SIZE: B

NOTES:

1. REMOVE ALL BURR'S AND REMOVE ALL SHARP EDGES 0.6mm±0.2mm MAX RADIUS AND CHAMFER, PRIOR TO WELD.
2. ALL WELDS ARE TO BE GAS METAL ARC WELDS (MIG) UNLESS OTHERWISE SPECIFIED.
3. ALL FILLET WELDS TO BE MAX 5MM UNLESS OTHERWISE SPECIFIED.
4. REMOVE ALL WELD SPLATTER
5. WELD BEAD MUST BE SMOOTH, PIN HOLES AND POROSITY NOT ALLOWED.
6. WELD QUALITY/PROCEDURE PER SOP. 620-7909 OR QUALITY/ENGINEERING APPROVED EQUIVALENT.
7. FINISH:
 - a. ALL THREADS MUST BE PLUGGED OR MASKED PRIOR TO PRETREATMENT AND POWDER COATING.
 - b. MASK ALL MARKED AREAS.
 - c. PRETREATMENT AND POWDER COAT PER SOP 620-1144 OR QUALITY/ENGINEERING APPROVED EQUIVALENT.
 - d. COLOR DICTATED BY SALES ORDER.
 - e. SEE SOP 622-200-103 FOR PART COLOR DESIGNATOR AND STRENGTH FG TABLE: 622-200-106.

REVISION HISTORY				
REV	DATE	DESCRIPTION	ECO	BY
A	8/31/2017	PRODUCTION RELEASE	15771	AW



ITEM NO.	PART NUMBER	DESCRIPTION	QTY.
1	718-5775-XX	ASSY, WELD, DISPLAY, HIIT BIKE	1
2	718-5495	Holder, Water bottle, turbo	1
3	740-7896	Screw, M4.2, 12mm, PHT, PH, SS	4
4	718-5731	CABLE, CONSOLE TO RPM/POWER, HIIT BIKE/UBE	1
5	718-5788	GROMMET, 14MM, 2 CABLE, HIIT BIKE	1

DOCUMENT STATUS:

NOTICE OF PROPRIETARY INFORMATION
THIS DOCUMENT SHALL NOT BE REPRODUCED NOR SHALL THE INFORMATION CONTAINED HEREIN BE USED BY OR DISCLOSED TO OTHER EXCEPT AS EXPRESSLY AUTHORIZED BY CORE HEALTH & FITNESS, LLC.

CLASS OF WORK	UNLESS OTHERWISE SPECIFIED DIMS ARE IN mm. TOLERANCES FOR MEASURE OF LENGTH ARE:								MATERIAL SEE BOM
	0.5 to 3	> 3 to 6	> 6 to 30	> 30 to 120	> 120 to 400	> 400 to 1000	> 1000 to 2000	> 2000	
FINE	±0.05	±0.05	±0.1	±0.15	±0.2	±0.3	±0.5	----	FINISH SEE PO
MEDIUM	±0.1	±0.1	±0.2	±0.3	±0.5	±0.8	±1.2	±2	
COARSE	±0.2	±0.3	±0.5	±0.8	±1.2	±2	±3	±4	
VERY COARSE	----	±0.5	±1	±1.5	±2.5	±4	±6	±8	

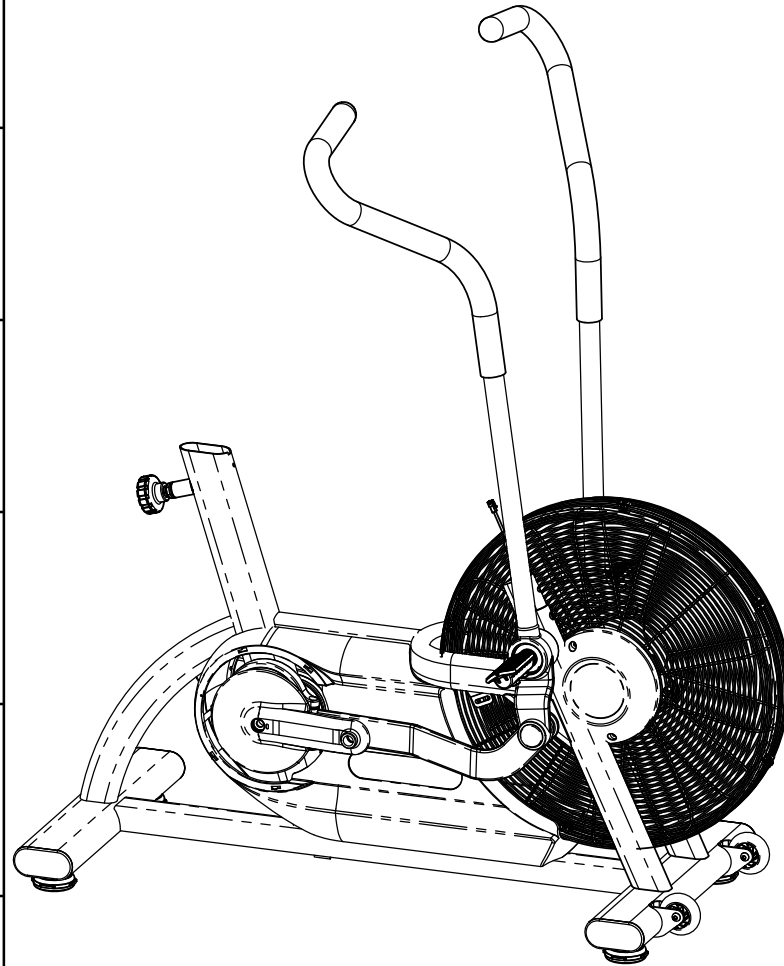
THIRD ANGLE PROJECTION		
DRAWN	INITIAL AW	DATE 8/31/2017
CHECKED		
APPROVED		
VENDOR:		P/N:

CORE HEALTH & FITNESS, LLC	
4400 NE 77th Ave., Suite 300 Vancouver, WA 98662	
CORE PART NO	REV
718-5774-XX	A
TITLE	
ASSY, DISPLAY BASE, HIIT BIKE	
SCALE: 1:20	SHEET 1 OF 1
SHEET SIZE: B	

U.O.M.		MM
--------	--	----

NOTES:
1. COLOR IS SPECIFIED IN FINAL SKU; COLOR DESIGNATION PER-XX SPECIFIED IN SOP 620-200-112

REVISION HISTORY				
REV	DATE	DESCRIPTION	ECO	BY
A	9/5/2017	PRODUCTION RELEASE	15771	AW



ITEM NO.	PART NUMBER	DESCRIPTION	QTY.	NOTES
1	110-3605	SCREW, M4.2, 38mm,PHT, PH, CS, ZP	5	
2	110-3709	Screw, M5x0.8, 10mm, PHM, PH, CS, NKL	4	
3	718-5486-XX	SHROUD, LEFT, TURBO TRAINER	1	
4	740-7850-XX	CAP, PLUG, 38mm-OD	2	REF
5	718-5448-XX	COVER, AXEL, FAN, TURBO	2	
6	718-5485-XX	SHROUD, RIGHT, TURBO TRAINER	1	
7	110-3604	SCREW,4.2M, 19mm, PHTF, PH, CS, ZP	1	
8	140-3613	Key, Parallel, 6mm X 6mm X 12mm	2	
9	740-7555	NUT, AXLE, B/B, M24x1.5	2	
10	740-7553	BEARING, 6005 SERIES, 25x47x12, 2RS	4	
11	140-3554	Retaining, Round Wire, 50 OD X 2.5	4	
12	740-7916	M5 X 16MM, DOWEL PIN	2	
13	718-5639	Assy, Pulley, Trans, Airfit, Gen2	1	
14	130-1814	BELT, 6J460, POLY-V	1	
15	130-1812	BELT, 6PK910, POLY-V	1	
16	718-5378	ASSY, BOTTOM BASKET, TURBO	1	
17	718-5383-XX	Assy, Crank Arm, Left, AirBike	1	
18	740-8145	BOLT, CRANKARM, M8	2	
19	718-5382-XX	ASS, CRANK ARM, RIGHT, TURBO	1	
20	718-5277	NUT, AXLE, B/B, E-/S- BIKE, GEN 2	3	
21	718-5431	BB spacer	1	
22	718-5387	ASSY, TENSIONER, MAIN, AirBike	1	
23	730-0899	Screw, M6x1.0, 12mm, PHM, PH, SS	1	
24	740-7164	Washer, M6, Ø6.5xØ16x1mm, SS	1	
25	120-3247	WASHER, ISO7089, M12	1	
26	110-3706	Nut, Nylor, M12x1.5, CS, ZP, Gr-10	1	
27	718-5614	PULLEY, K6, POLY-V, Ø60mm X Ø25mm	1	
28	718-5615	Spacer, Trans, Airfit, Gen2	1	
29	718-5612	Shaft, Trans, Airfit, Gen2	1	
30	718-5619	Spacer, Trans, Airfit, Gen2	1	

ITEM NO.	PART NUMBER	DESCRIPTION	QTY.	NOTES
31	740-7187	Screw, M6x1.0, 10mm, BHC, HE, SS	2	
32	740-8006	WHEEL, FRONT FOOT, SPINNER	2	
33	740-8007	Bolt, Sex, M6x1.0, Ø8mm x 30mm	2	
34	718-5627-XX	Foot, Adjustable, Plastic	4	
35	740-7558-XX	END CAP, STABILIZER	4	
36	718-5611-XX	WELDMENT, FRAME, G2, AIRFIT	1	
37	110-3653	Screw, M8x1.25, 16mm, HCS, HE, CS, NKL, Gr 10.9	4	REF
38	740-9201	KNOB, POP-PIN, ASSEMBLY, S5/S7	1	
39	718-5562	CABLE, SENSOR, DISPLAY, AIR BIKE	1	
40	140-3490	GROMMET, OD: .44", ID: .25", TH: .25", PU	1	
41	731-0355	WASHER,PLAIN,M8,NARROW	4	REF
42	120-3405	Washer, Wave, Ø0.393" x Ø0.5" x 0.007"THK	2	
43	110-3566	Screw, M8x1.25, 20mm, SHC, HK, AS, NP, EC B, Gr 12.9	2	REF
44	120-3353	Washer, Belleville, Ø8.3 x Ø25 x 3mm	2	REF
45	718-5816-XX	ASSY, HANDLEBAR, UB, LEFT, HIIT BIKE	1	
46	718-5813-XX	HANDLEBAR, UB, RIGHT, HIIT BIKE	1	
47	718-5566-XX	LINK, UPPER BODY, RIGHT, AIR BIKE	1	
48	718-5567-XX	LINK, UPPER BODY, LEFT, AIR BIKE	1	
49	110-3601	PIN, 10MM OD X 75MM, M6 BOTH ENDS	2	
50	110-3600	Screw, M6x1, 12mm, SHFC, HK, AS, NKL, Gr-12.9	4	
51	718-5638-XX	Assembly, Grill, Fan, Airfit, Gen2	1	
52	718-5466-XX	ASSY, FAN, TURBO	1	
53	731-0373	WASHER,PLAIN,M6	6	
54	740-7404	Screw, M6x1.0, 12mm, SHC, HK, SS	6	
55	718-5787	GROMMET, 14MM SLOT, 2 CABLE, HIIT BIKE	1	
56	718-5797	FOOT PEG, HIIT BIKE	2	REF

DOCUMENT STATUS:

NOTICE OF PROPRIETARY INFORMATION
THIS DOCUMENT SHALL NOT BE REPRODUCED NOR SHALL THE INFORMATION CONTAINED HEREIN BE USED BY OR DISCLOSED TO OTHER EXCEPT AS EXPRESSLY AUTHORIZED BY CORE HEALTH & FITNESS, LLC.

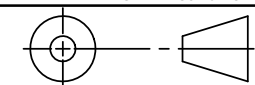
MATERIAL
SEE BOM

FINISH
SEE NOTES

VENDOR:

P/N:

THIRD ANGLE PROJECTION



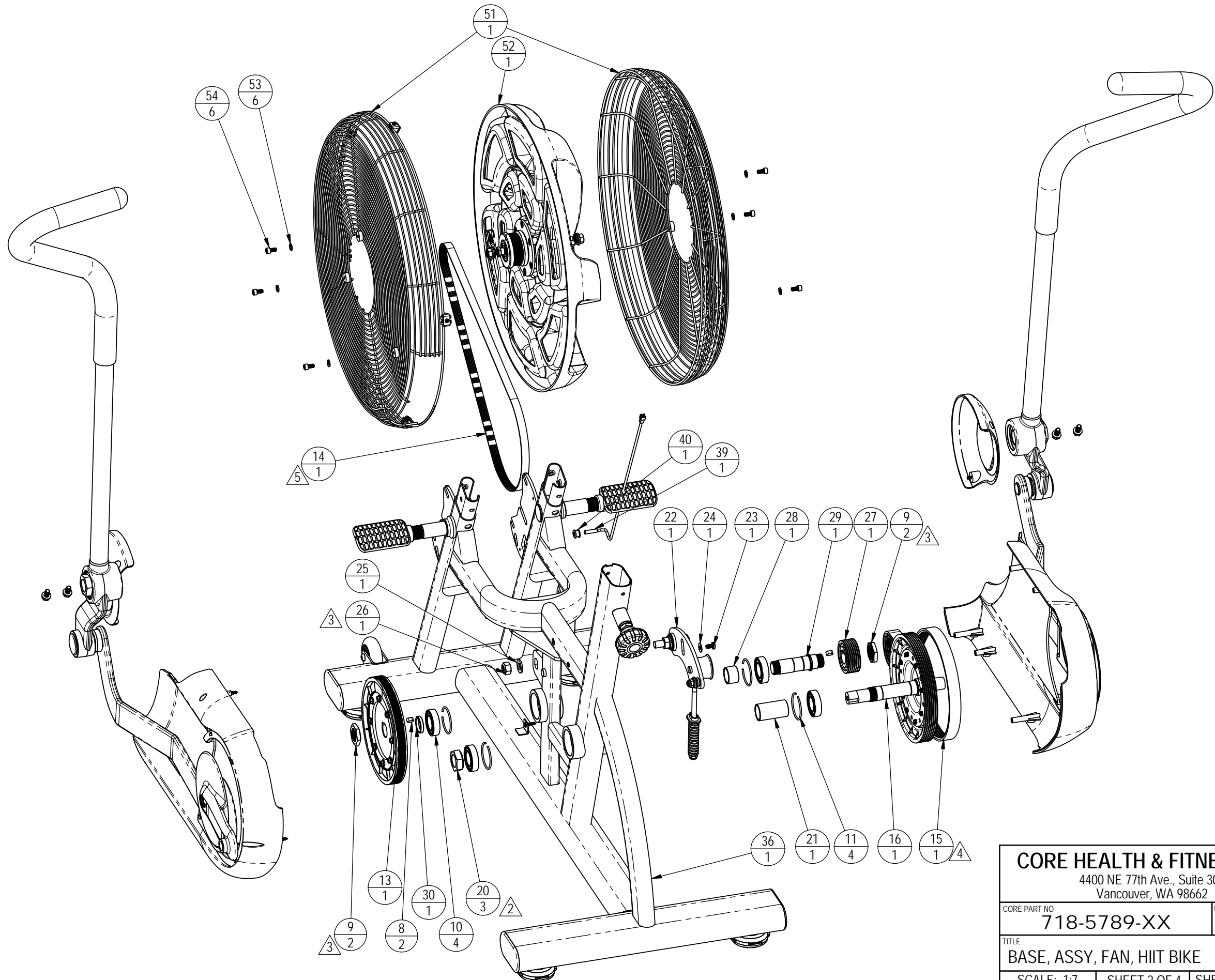
DRAWN	INITIAL	DATE
AW	AW	9/5/2017
CHECKED		
APPROVED		

CORE HEALTH & FITNESS, LLC

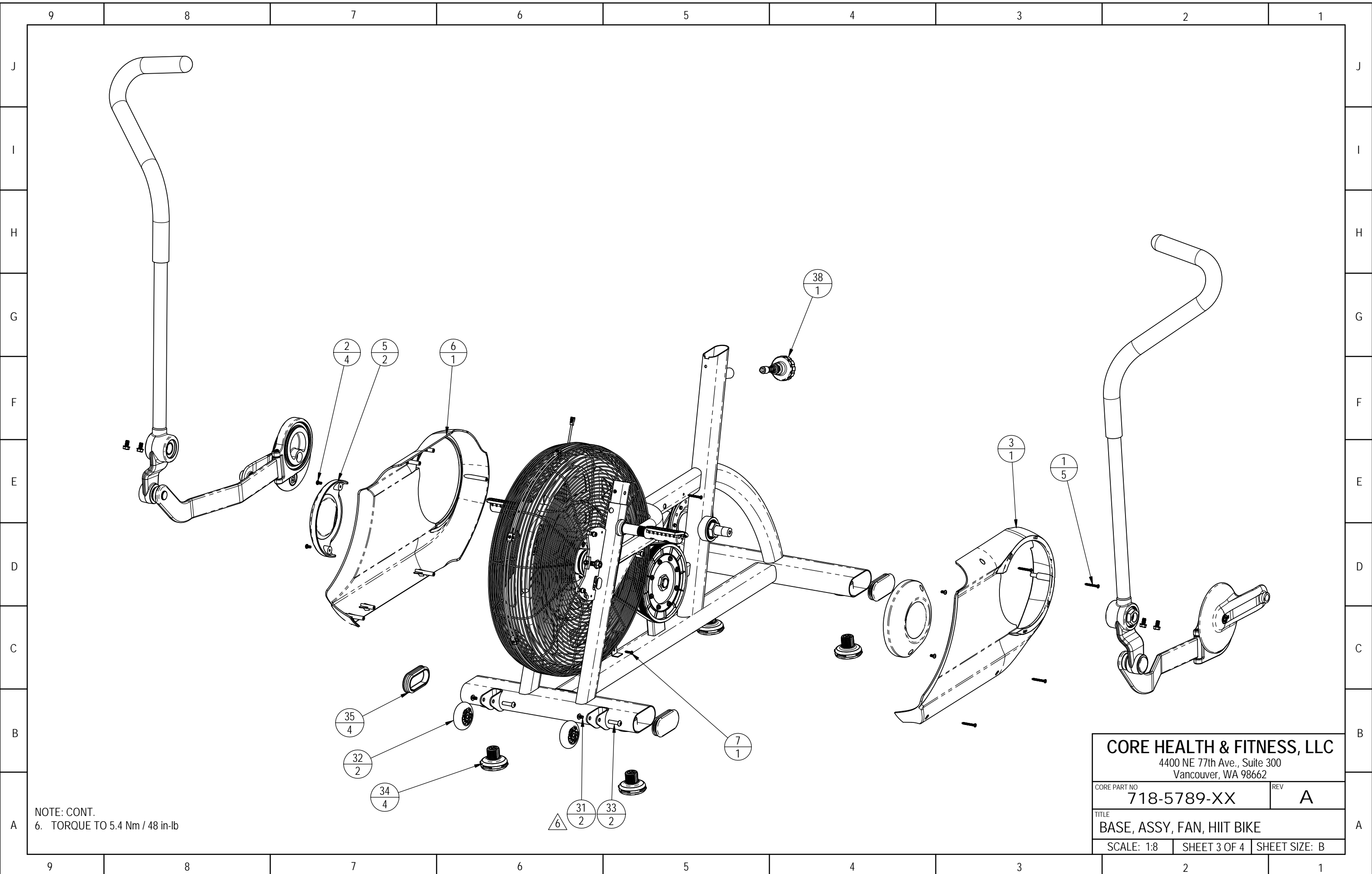
4400 NE 77th Ave., Suite 300
Vancouver, WA 98662

CORE PART NO	REV
718-5789-XX	A
TITLE BASE, ASSY, FAN, HIIT BIKE	
SCALE: 1:12	SHEET 1 OF 4
SHEET SIZE: B	

- NOTES: CONT.
2. TORQUE TO Nm 67.8 Nm/ 50 ft-lb
 3. TORQUE TO Nm 54.2 Nm / 40 ft-lb
 4. TENSION BELT TO 130-140 Hz
 5. TENSION BELT TO 95-105 Hz

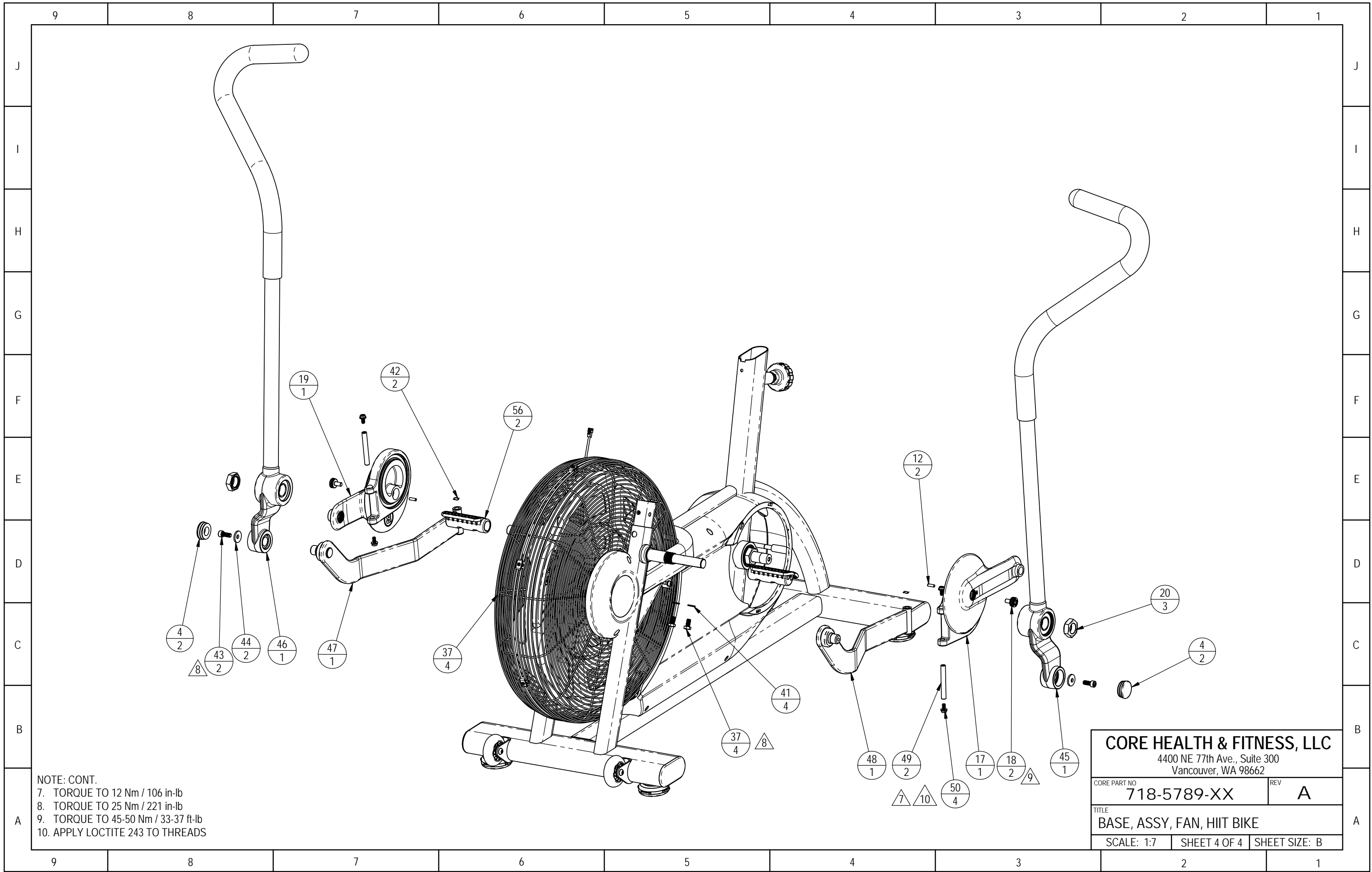


CORE HEALTH & FITNESS, LLC		
4400 NE 77th Ave., Suite 300 Vancouver, WA 98662		
CORE PART NO	718-5789-XX	REV A
TITLE BASE, ASSY, FAN, HIIT BIKE		
SCALE: 1:7	SHEET 2 OF 4	SHEET SIZE: B



NOTE: CONT.
 6. TORQUE TO 5.4 Nm / 48 in-lb

CORE HEALTH & FITNESS, LLC		
4400 NE 77th Ave., Suite 300 Vancouver, WA 98662		
CORE PART NO	718-5789-XX	REV A
TITLE BASE, ASSY, FAN, HIIT BIKE		
SCALE: 1:8	SHEET 3 OF 4	SHEET SIZE: B



NOTE: CONT.
 7. TORQUE TO 12 Nm / 106 in-lb
 8. TORQUE TO 25 Nm / 221 in-lb
 9. TORQUE TO 45-50 Nm / 33-37 ft-lb
 10. APPLY LOCTITE 243 TO THREADS

CORE HEALTH & FITNESS, LLC		
4400 NE 77th Ave., Suite 300 Vancouver, WA 98662		
CORE PART NO	718-5789-XX	REV A
TITLE BASE, ASSY, FAN, HIIT BIKE		
SCALE: 1:7	SHEET 4 OF 4	SHEET SIZE: B